

DEMAND RESPONSE

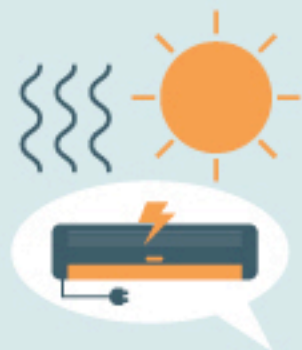
HOW IT WORKS

Demand Response, a joint initiative of ARENA and the Australian Energy Market Operator, aims to ensure stable energy supply during times of peak demand. ARENA has contributed \$30 million to the project, which will be rolled out in the 2017-18 summer. The NSW government has contributed \$7.5 million.



STEP 1

Energy users sign up to voluntarily reduce energy usage in times of extreme demand



STEP 2

Electricity demand surges, for example due to extreme weather



STEP 3

Users reduce their energy consumption



STEP 4

Reduced demand helps balance supply and demand and stabilises grid



STEP 5

Users are paid for their reduced demand