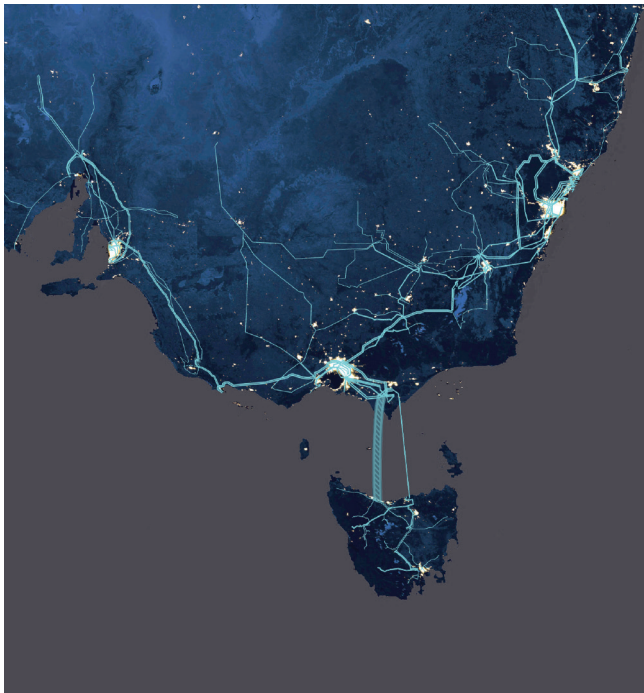
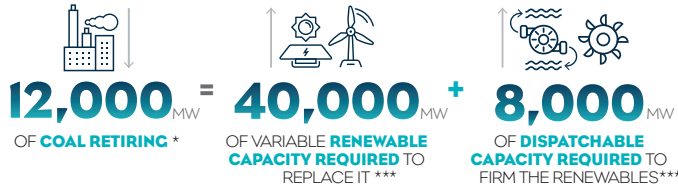


Marinus Link and supporting transmission will help Australia's transition to a low emissions future by unlocking Tasmania's renewable energy and storage resources to provide dispatchable energy when it's needed, for less.

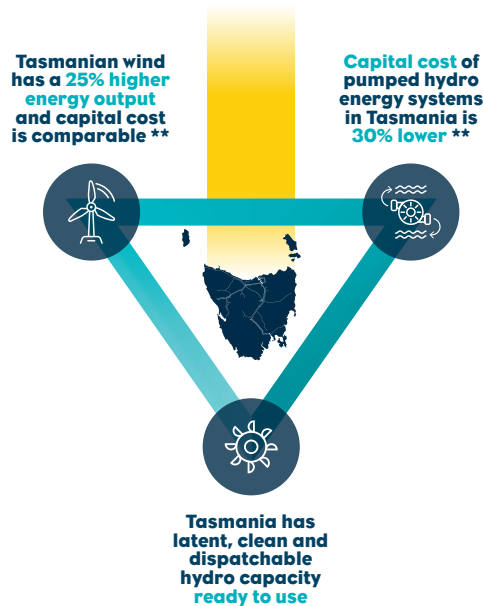
DELIVERING LOW COST, RELIABLE & CLEAN ENERGY



By 2035 in the NEM

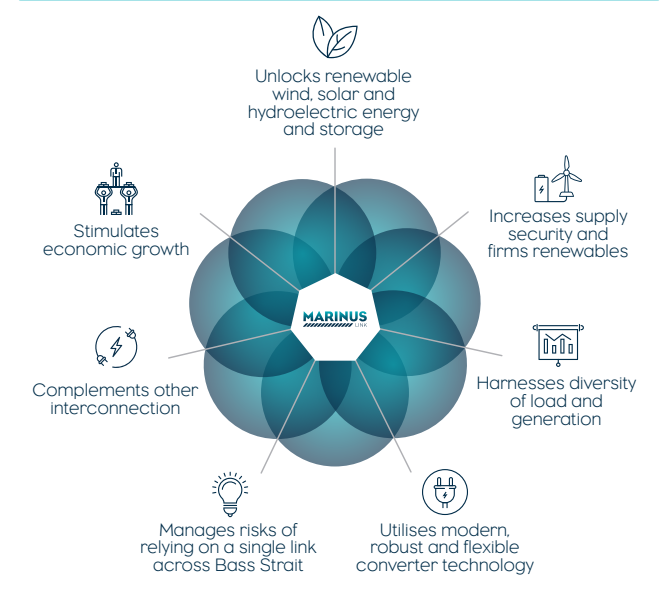


Marinus Link provides the NEM with access to Tasmania's **cost-competitive** renewable energy and storage resources. It enables up to 1500 MW of untapped, clean, and **dispatchable** capacity across Bass Strait.



This access means that, over Marinus Link's 40+ year life, **savings to the NEM** will significantly outweigh the transmission investment of ~\$3.5 billion.***

Estimated to reduce at least 45 million tonnes of CO² emissions from the NEM by 2050 ***



Feasible for up to 1500 MW | **Can be in service from 2027**

TasNetworks, supported by the Tasmanian and Australian Governments, is progressing Marinus Link and supporting transmission.

The following are required to support an investment decision and progress a 'shovel ready' project that can be delivered when needed:

- ◇ **Fair pricing outcomes**
- ◇ **Funding secured**
- ◇ **Ownership model agreed**

The alternative to Marinus Link is a more expensive, more emissions intensive energy market for Australia.